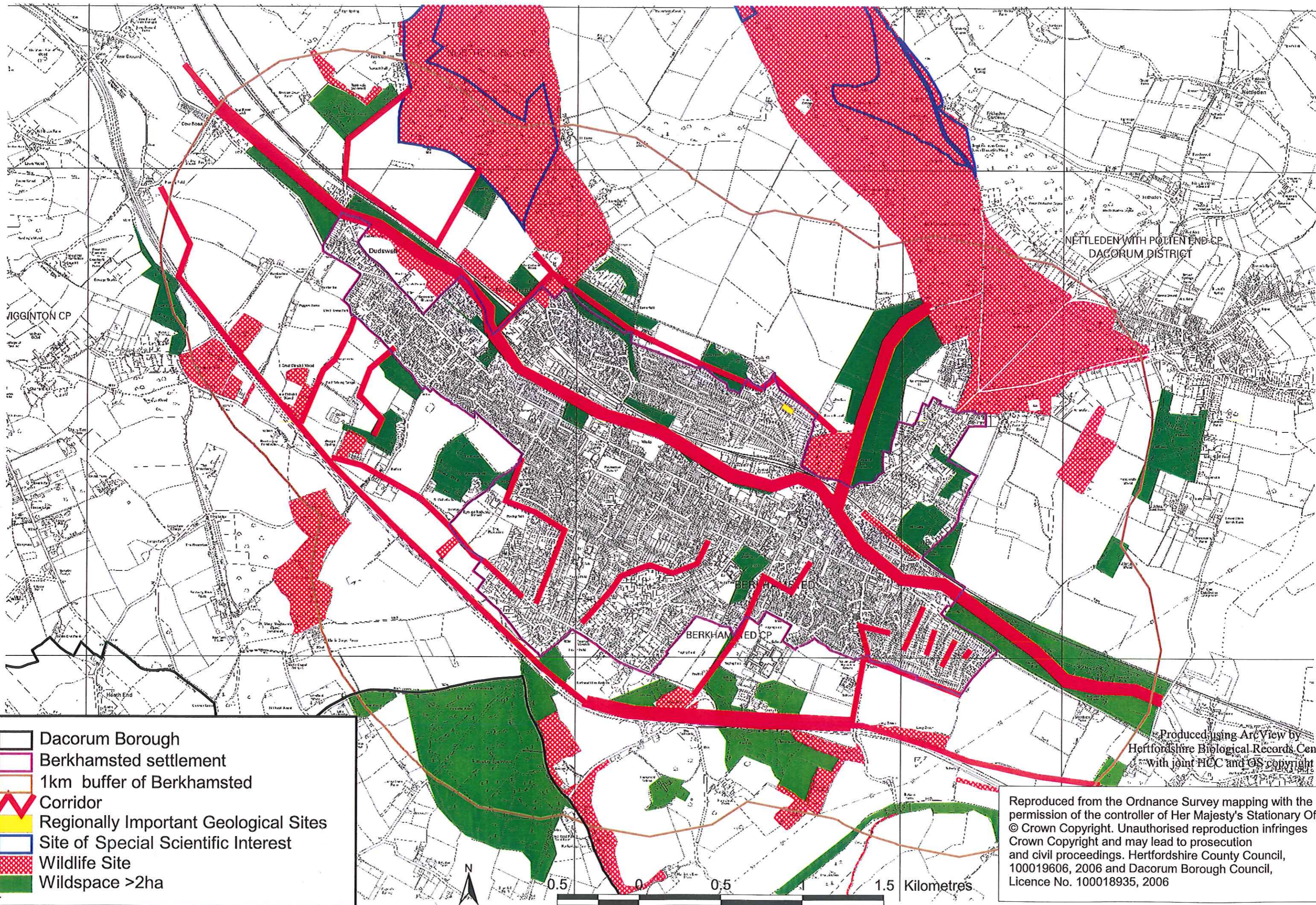










# Appendix 2.2 Principal existing biodiversity corridors

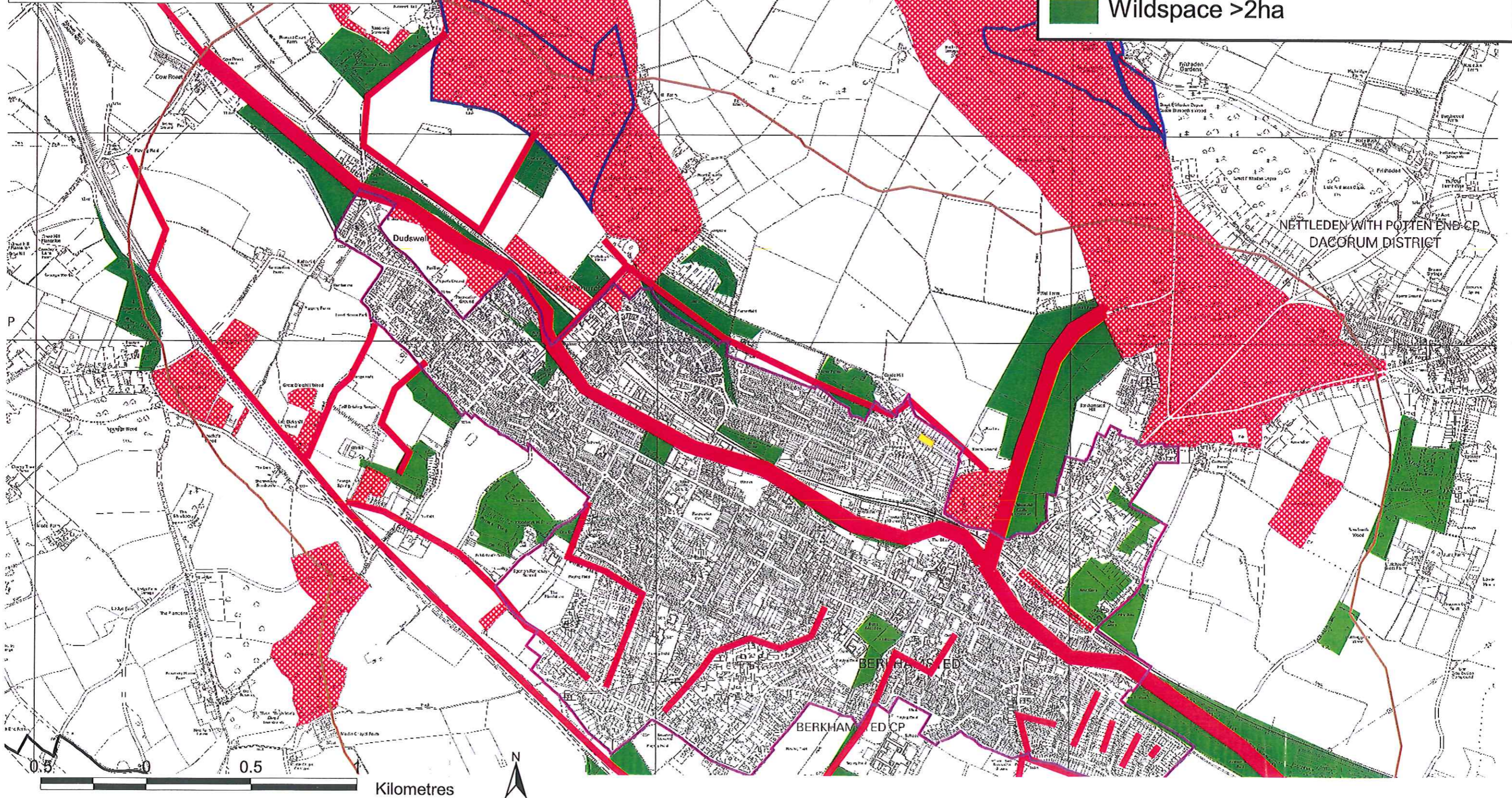


# Appendix 2.2 A Principal existing biodiversity corridors

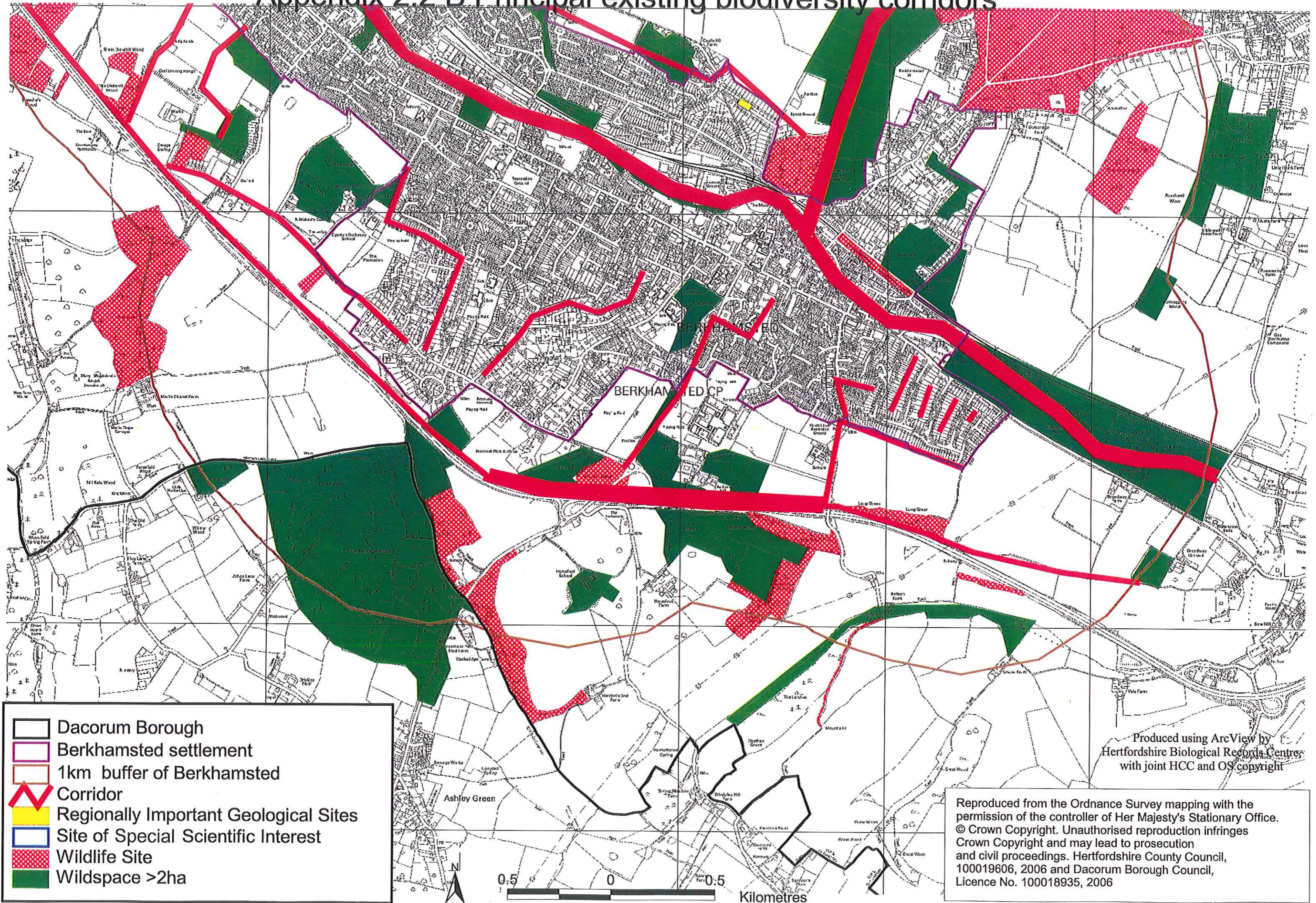
Produced using ArcView by  
Hertfordshire Biological Records Centre,  
with joint HCC and OS copyright









Reproduced from the Ordnance Survey mapping with the  
permission of the controller of Her Majesty's Stationary Office.  
© Crown Copyright. Unauthorised reproduction infringes  
Crown Copyright and may lead to prosecution  
and civil proceedings. Hertfordshire County Council,  
100019606, 2006 and Dacorum Borough Council,  
Licence No. 100018935, 2006

-  Dacorum Borough
-  Berkhamsted settlement
-  1km buffer of Berkhamsted
-  Corridor
-  Regionally Important Geological Sites
-  Site of Special Scientific Interest
-  Wildlife Site
-  Wildspace >2ha



# Appendix 2.2 B Principal existing biodiversity corridors



-  Dacorum Borough
-  Berkhamsted settlement
-  1km buffer of Berkhamsted
-  Corridor
-  Regionally Important Geological Sites
-  Site of Special Scientific Interest
-  Wildlife Site
-  Wildspace >2ha

Produced using ArcView by  
Hertfordshire Biological Records Centre  
with joint HCC and OS copyright

Reproduced from the Ordnance Survey mapping with the permission of the controller of Her Majesty's Stationary Office. © Crown Copyright. Unauthorised reproduction infringes Crown Copyright and may lead to prosecution and civil proceedings. Hertfordshire County Council, 100019606, 2006 and Dacorum Borough Council, Licence No. 100018935, 2006

# Appendix 2.3 Open Land, open space and Rights of Way

